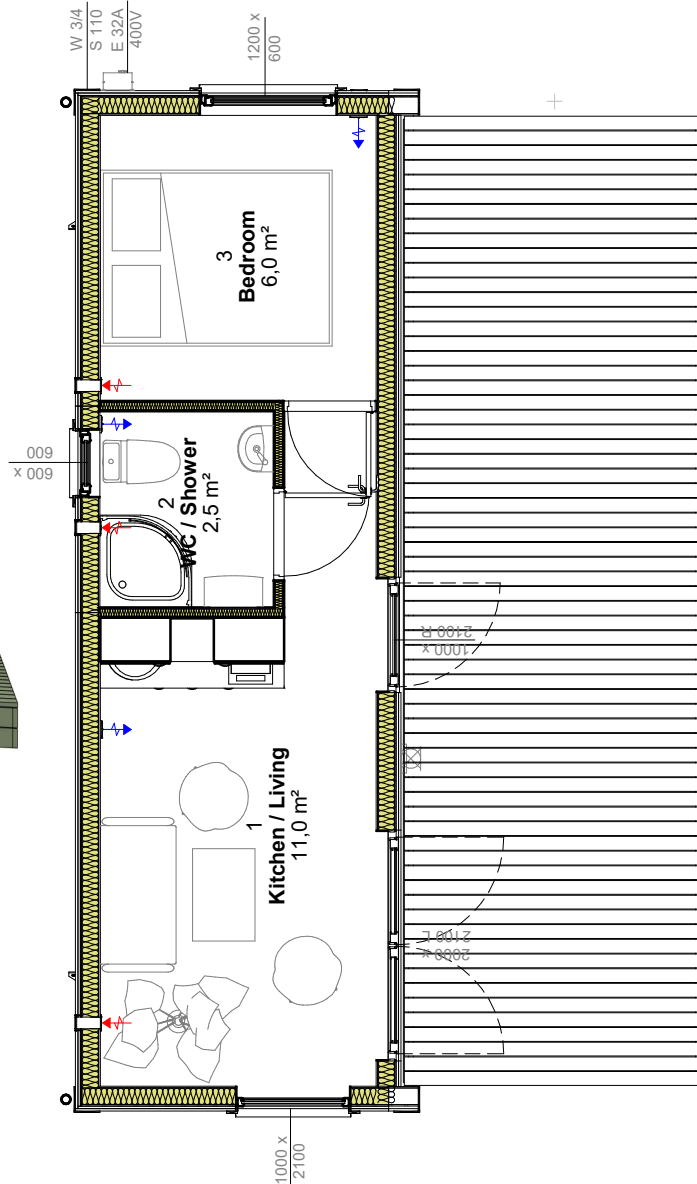


NASVA 4



PRODUCT SPECIFICATION:

Roof angle	1:50 / 2°
Weight	ca' 5500 kg
Transportation measures	2970 x 8840 x 3000 mm
Inside measures	2390 x 8410 x 2449 mm
Building area	26,6 m ²
Kitchen / Living	11,0 m ²
WC / Shower	2,5 m ²
Bedroom	6,0 m ²

More detailed information on next page

Producer:



GREENTEC HOUSES OÜ
www.greentec.ee

NASVA 4



STANDARD EQUIPPING:

GROUND FLOOR, U=0,19 W/(m²K), structure thickness 242mm, dry rooms

- Floor cover parquet 14mm, oak veneer, skirting lists MDF oak imitation
- Floor cover underlay 2,0mm
- Particle board P5 22mm, screwed and glued to the beams
- Wooden frame 45*195mm, C24, c/c 600mm
- Insulation, mineral glass wool $\lambda_D=0,035$ W/mK, 100+100mm
- Cement board, wind screen 9mm, joints/connections taped
- Wooden sill 45*145mm, impregnated, on the outer perimeter of the module

GROUND FLOOR, U=0,19 W/(m²K), structure thickness 228mm, wet rooms

- Floor cover PVC 2,0mm, slip resistant
- Particle board P5 22mm, screwed and glued to the beams
- Wooden frame 45*195mm, C24, c/c 600mm
- Insulation, mineral glass wool $\lambda_D=0,035$ W/mK, 100+100mm
- Cement board, wind screen 9mm, joints/connections taped
- Wooden sill 45*145mm, impregnated, on the perimeter of the module

EXTERNAL WALLS, U=0,25 W/(m²K), structure thickness 215mm, dry rooms

- Internal finishing siding STV 14*120mm, stained white
- Vapour barrier PU plastic 0,2mm, UV resistant, joints/connections taped
- Wooden frame 45*145mm, C24, c/c 600mm
- Insulation, mineral glass wool $\lambda_D=0,035$ W/mK, 100+50mm
- Chipboard OSB-3 12mm
- Wind barrier plastic, joints/connections taped
- Wooden nailers 21*70mm, perforated for ventilation
- Vertical wooden weatherboards UYS 21*120mm, once primer and once finally painted

EXTERNAL WALLS, U=0,25 W/(m²K), structure thickness 211mm, wet rooms

- Internal finishing veneer board 11mm, water resistant laminated, white
- Wooden frame 45*145mm, C24, c/c 600mm
- Insulation, mineral glass wool $\lambda_D=0,035$ W/mK, 100+50mm
- Chipboard OSB-3 12mm
- Wind barrier plastic, joints/connections taped
- Wooden nailers 21*70mm, perforated for ventilation
- Vertical wooden weatherboards UYS 21*120mm, once primer and once finally painted

INTERNAL WALLS, inside modular unit, structure thickness 94/123mm, dry rooms

- Internal finishing siding STV 14*120mm, stained white
- Wooden frame 42/45*66/95mm, FJ, c/c 600mm
- Insulation, mineral glass wool $\lambda_D=0,035$ W/mK, 50mm
- Internal finishing siding STV 14*120mm, stained white

INTERNAL WALLS, inside modular unit, structure thickness 91mm, wet rooms

- Internal finishing veneer board 11mm, water resistant laminated, white
- Wooden frame 42*66mm, FJ, c/c 600mm
- Insulation, mineral glass wool $\lambda_D=0,035$ W/mK, 50mm
- Internal finishing siding STV 14*120mm, stained white

ROOF, U=0,20 W/(m²K), structure thickness 269mm

- Roof cover PVC 1,2mm, grey
- Chipboard OSB-3 12mm
- Wooden battens 45*45mm, KD, c/c 600mm, for roof ventilation
- Wind barrier plastic, joints/connections taped
- Wooden frame 45*195mm, C24, c/c 600mm
- Insulation, mineral glass wool $\lambda_D=0,035$ W/mK, 100+100mm
- Vapour barrier PU plastic 0,2mm, UV resistant, joints/connections taped
- Internal finishing siding STV 14*120mm, stained white

WINDOWS

- 3pc PVC window 1000*2100mm, fixed, U=0,96 W/m²K, white
- 1pc PVC window 1200*600mm, bottom hung opening, U=1,29 W/m²K, white
- 1pc PVC window 600*600mm, side hung opening, U=1,40 W/m²K, white

DOORS

- 1pc PVC entrance door, outward opening, 1000*2100mm, right, U=1,12 W/m²K, white
- 2pc MDF internal door set, 800*2100mm, flush, white

VENTILATION

- Electrical wall fan OUT-100mm, cord switch with shutter in dry rooms
- Electrical wall fan OUT-100mm, humidity sensor switch with shutter in wet rooms
- Fresh air valves

ELECTRICITY

- Electrical connection wall box 32A 400V IN-OUT, external
- Electrical distribution wall box for 24 modules, internal
- Interior outlets, wires mounted on to wall cable routing/trunking box
- 10pc Light LED, switch operated, interior, ceiling
- 1pc Light LED, switch operated, exterior, wall (next to the external door)

PIPEWORK/SANITARY

- Water-3/4" and sewer-110mm connection box, connector on the short end wall of the module
- Pressure reducing valve
- PP internal sewer piping
- PEX-AL-PEX water piping
- WC/SHOWER: Basin ceramic 400mm with mixer
- WC/SHOWER: Toilet seat ceramic
- WC/SHOWER: Shower corner 800*800mm set, incl.; soap holder, shower mixer
- WC/SHOWER: Floor ladder round

HEATING

- KITCHEN/LIVING: 1pc Electrical convector 750W
- BEDROOM: 1pc Electrical convector 750W
- WC/SHOWER: 1pc Electrical towel dryer with thermostate in WC/Shower
- WC/SHOWER: 1pc Electrical water-heater 55L, wall mounted, vertical

FURNISHING AND APPLIANCES

- WC/SHOWER: Clothes hanger hook 4 on wall
- WC/SHOWER: Mirror cabinet above basin, with light
- WC/SHOWER: Toilet paper holder on wall
- LIVING: Clothes hanger hooks bar 4 on wall, near to the entrance door



EXTERIOR COLORS

- | | | |
|--------------------------|----------|--------------------|
| <input type="checkbox"/> | RAL 7004 | Signal Grey |
| <input type="checkbox"/> | RAL 7043 | Traffic Grey B |
| <input type="checkbox"/> | RAL 9004 | Signal Black |
| <input type="checkbox"/> | | By customer choice |

ADD ON EQUIPPING:



CONSTRUCTIVE

- Steel profile base frame 120mm, painted, lifting by crane. Recomm. when lifting and moving frequently
- Terrace elements 8400*2550mm, impregnated, decking boards 28*120mm c/c 125mm



WINDOWS AND DOORS

- 1pc PVC terrace double door, outward opening, 2000*2100mm, U=1,12 W/m²K, white, instead windows 2pc 1000*2100 in main facade



HEATING

- Heat pump, Air-Air



FURNISHING AND APPLIANCES

- Kitchen set, white/grey, incl.; mini fridge, stove, micro, sink and mixer
- Full set of the furniture and appliances; 2pc armchairs (can be set as a guest bed), 1pc sofa desk, 1600*2000mm master bed, 1pc shelf on the wall, curtains, 1pc wall mounted flat TV, dishes, towels, carpets, blankets, pillows, bed sheets



PACKING

- Packing module in a heat-shrinkable plastic for longer transportation in a dirty time

Producer: