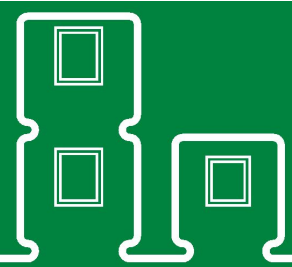


EV10L



EV10L is a functional EVAC module with living/bedroom, kitchen with dining area, WC with a shower and an entrance/wardrobe room

PRODUCT SPECIFICATION:

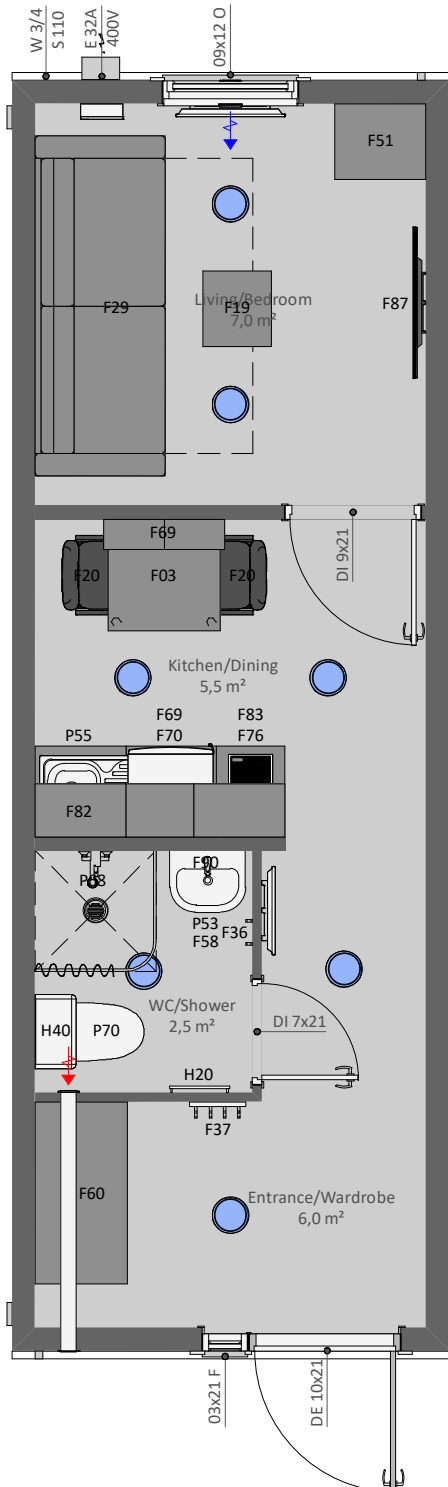
Building area	24,3 m ²
Total area, of which	21,0 m ²
- Entrance/Wardrobe	6,0 m ²
- WC/Shower	2,5 m ²
- Kitchen/Dining	5,5 m ²
- Bedroom	7,0 m ²
Transportation measures	2950 x 8570 x 3000 mm
Inside Measures	2582 x 8092 x 2400 mm
Weight	ca' 5400 kg
Roof angle	1:60

INCLUDING:

- C01 - Galvanized steel profile frame, liftable with forklift and crane
- F36 - Clothes hanger hook 1 pc on wall
- F37 - Clothes hanger hooks 4 pc on wall
- F58 - Cabinet under basin
- F69 - Kitchen cabinet set
- F70 - Fridge S
- F76 - Stove 2
- F82 - Microwave oven
- F83 - Cooker hood, filtering
- F90 - Mirror on wall
- P53 - Ceramic basin L with mixer
- P55 - Sink, stainless, with mixer
- P68 - Shower area set, incl.; floor drainage, curtain, shower mixer
- P70 - Toilet seat and toilet paper roll holder
- H20 - Electrical towel dryer
- H40 - Water heater 100 L

AVAILABLE AS ADD ON PRODUCTS:

- S05 - Window grid 900x1200 mm
- S18 - Venetian blind 900x1200 mm
- S25 - SmartLock for doors
- F03 - Dining table for 2 persons
- F19 - Sofa table
- F20 - Chair customer/dining
- F29 - Sofa bed
- F51 - Cabinet with shelves
- F60 - Wardrobe
- F87 - TV
- H50 - Heat Pump/Air Conditioning (Air-Air)
- V35 - Wall fan OUT-100/IN-100 with heat recovery
- E10 - Electrical connection cable 32A when campus building
 - External connections when campus building
 - Internal connections when campus building
 - Fire resistant structures



Producer:



GREENTEC HOUSES OÜ

<https://greentec.ee>