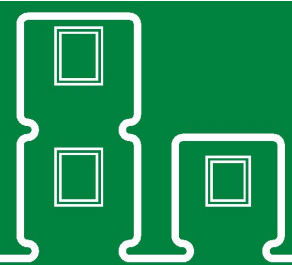


EV01L



EV01L is a functional EVAC module with two bedrooms, two WC with a shower and a corridor in the middle of the module. Can be connected to other our site hut modules

PRODUCT SPECIFICATION:

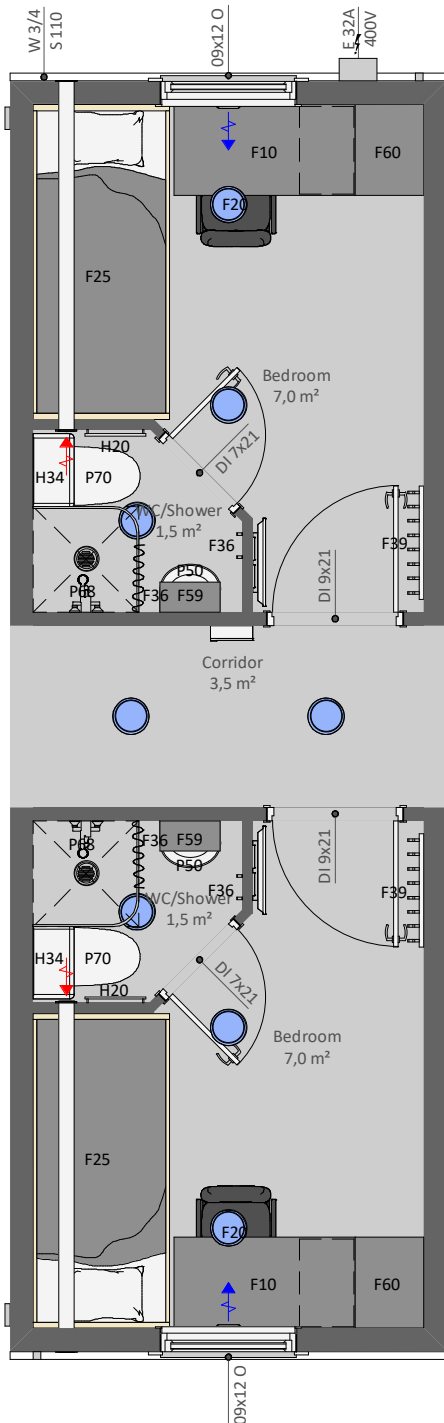
Building area	24,3 m ²
Total area, of which	20,5 m ²
- Bedroom	7,0 m ²
- WC/Shower	1,5 m ²
- Corridor	3,5 m ²
- WC/Shower	1,5 m ²
- Bedroom	7,0 m ²
Transportation measures	2950 x 8570 x 3000 mm
Inside Measures	2582 x 8092 x 2400 mm
Weight	ca' 5600 kg
Roof angle	1:60

INCLUDING:

- C01 - Galvanized steel profile frame, liftable with forklift and crane
- F36 - Clothes hanger hook 1 pc on wall
- F39 - Clothes hanger hooks 8 pc on wall
- F59 - Cabinet with mirror above the basin, white
- P50 - Ceramic basin S with mixer
- P68 - Shower area set, incl.; floor drainage, curtain, shower mixer
- P70 - Toilet seat and toilet paper roll holder
- H20 - Electrical towel dryer
- H34 - Water heater 50 L

AVAILABLE AS ADD ON PRODUCTS:

- CEWB - Long side wall opening element B (filling element)
- CEWC1 - Long side wall opening element C1 (without door leaf)
- CEWC2 - Long side wall opening element C2 (with ext. door leaf)
- CEWC3 - Long side wall opening element C3 (with int. door leaf)
- CEWC4 - Long side wall opening element C4 (with remov. fill. elem.)
- CEWC5 - Long side wall opening element C5 (with remov. fill. elem.)
- CEWC6 - Long side wall opening element C6 (with fixed window)
- S05 - Window grid 900x1200 mm
- S18 - Venetian blind 900x1200 mm
- S25 - SmartLock for doors
- F10 - Desk with drawer cabinet
- F20 - Chair customer/dining
- F25 - Bed single 900x2000mm with mattress
- F60 - Wardrobe
- H50 - Heat Pump/Air Conditioning (Air-Air)
- V35 - Wall fan OUT-100/IN-100 with heat recovery
- E10 - Electrical connection cable 32A when campus building
- External connections when campus building
- Internal connections when campus building
- Fire resistant structures



Producer:



GREENTEC HOUSES OÜ
<https://greentec.ee>